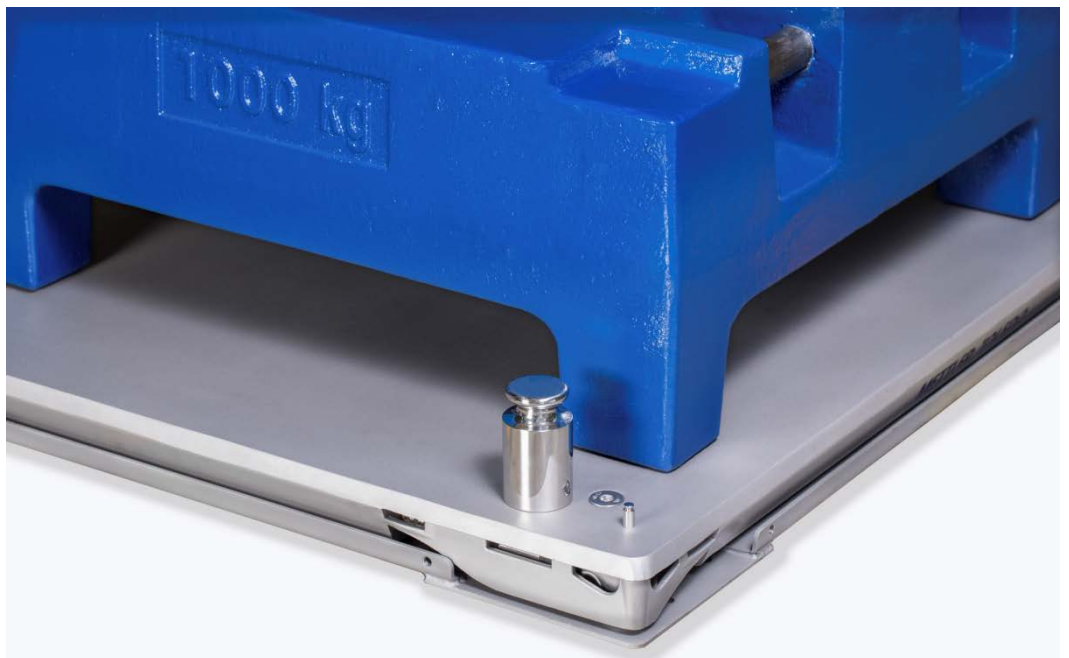


PowerDeck Digital Floor Scale

New from METTLER TOLEDO

METTLER TOLEDO Launches PowerDeck™ - combining proven POWERCELL® digital load cell technology with a rugged platform design. Features such as improved accuracy, real-time operator guidance, and predictive maintenance lead to improvements throughout your production facility.

Greifensee, Switzerland. January 2018 - Traditionally known for their reliability issues, floor scales can be a major source of headaches for staff throughout an industrial facility. Analog load cells, cables and junction boxes are prone to issues that can lead to weighing errors and disruptions in the production schedule. METTLER TOLEDO PowerDeck is poised to eliminate these traditional floor-scale pain points.



METTLER TOLEDO

By implementing POWERCELL digital technology PowerDeck is able to address 4 key areas of improvement over traditional analog floor scales, including:

- Real-Time Operator Guidance: detecting and alerting operators when product is improperly loaded, guiding users to optimal load placement. This feature helps to avoid uneven filling, spills, inaccurate weighments and bad batches.
- A Durable Platform that Holds Its Superior Accuracy: no longer must you move from scale to scale depending on batch size and needed accuracy. Weigh multiple batch sizes on a single platform with PowerDeck, and calibrate only when needed.
- Reduced Cost to Maintain: by removing the junction box and creating a system that is fully water proof, maintenance costs for break-fixes are drastically reduced.
- Visibility in to Scale Health through Advanced Diagnostics: real-time alerts for environmental hazards such as debris, shock-loading and temperature fluctuation allow users increased visibility to scale health – ensuring accurate and reliable weighing.

PowerDeck is designed to handle the harshest industrial production facility conditions while reducing maintenance cost, increasing productivity and maximizing yield. The benefits can be seen throughout all areas of operation.

For more detail:

► www.mt.com/Powerdeck



About METTLER TOLEDO

METTLER TOLEDO is a leading global manufacturer of precision instruments. The Company is the world's largest manufacturer and marketer of weighing instruments for use in laboratory, industrial and food retailing applications. The Company also holds top-three market positions for several related analytical instruments and is a leading provider of automated chemistry systems used in drug and chemical compound discovery and development. In addition, the Company is the world's largest manufacturer and marketer of metal detection systems used in production and packaging. Additional information about METTLER TOLEDO can be found at

► www.mt.com

Media Contact:

Morgan Clarke

METTLER TOLEDO

morgan.clarke@mt.com

+1 (614) 841-7313

© 01/2018 Mettler-Toledo GmbH